

BUSINESS, INDUSTRIAL, PUBLIC AND RENEWABLE DESIGN

TEAM MEMBERS /

Ivo Skelin, i.a.,
manager

Hrvojka Skelin, d.i.a.,
partner

Maja Vukušić, d.i.a., cert.arch.,
project leader

Mirko Majić, d.i.a.,
project leader

Zoran Zelić, d.i.a.,
project collaborator

Hana Golubovac Ehrenfreund, d.i.a.,
project collaborator

Marko Đuran, građ.teh.,
3d vizualizer

Mirna Bobinac,
office manager

Irena Stanko,
administrator



photo: Mirna Horvat

FORMER TEAM MEMBERS /

Andre Castro Vasconcelos, d.i.a.,
project collaborator

Tanja Kričkić, d.i.a.,
partner

Iva Šilović Grabovac, d.i.a., cert.arch.,
partner

Goran Obranović, d.i.a., cert.arch.,
project leader

Petra Kelentrić, mba,
office manager

In order for Out-Of-The-Box architecture to be created it is necessary to set up the box and then get out of it. It is necessary to set up a procedures protocol; a work process that abides by the laws and professional standards; a work process that sets up, in detail and unambiguously, work procedures, control systems and action protocols crucial for safe navigation through the complexities of the design, permitting and construction processes. A procedure needs to be set up that will minimize the possibility of making a mistake, that formulates and automates all repetitive but unavoidable procedures so time can be devoted to creation. izvanOkvira wishes to get out of that box once it is created and charter unknown lands; explore; play; leave no stone unturned; not be afraid to tear a sheet of paper; turn the starting presumptions upside down and start afresh; work passionately but calmly; work insanely but reasonably; respect the developer; respect the space; respect the people who will inhabit our houses; respect the nature we live and work in; explore and feel the space; hear the client and know what the client needs to hear. Be brave. Love.

izvan
okvira

BUSINESS DESIGN

2018	HT billboard, Radnička building, Zagreb, preliminary design HT billboard, T-center Dubrovnik, preliminary design HT digital totem, Radnička building, Zagreb, preliminary design Administrative building, Rijeka, approx. 3,500 sqm, alterations to preliminary design	2010. HT LTDS, Varaždin, approx. 1,260 sqm, detailed design – reconstruction Bidd D warehouse, Zagreb, approx. 930 sqm, detailed design	Dugo Selo, approx. 4,500 sqm, preliminary design for UPI-2M Residential & office building with garage, Dubrovnik, approx. 11,700 sqm, preliminary design Lidl shopping centre, Kutina, approx. 1,500 sqm, preliminary design for UPI-2M
2017.	Gogreen market entrance, Zagreb, main design – reconstruction Hrvatski telekom totem, Sky office building, detailed design Međimurjeplet production and administrative building, approx. 27,000 sqm, Čakovec, preliminary and main design – reconstruction (generators and chilling units mounting)	2009. HT LTDS, Varaždin, approx. 1,260 sqm, preliminary and main design – reconstruction Bidd D warehouse, Zagreb, approx. 930 sqm, preliminary and main design Poreč centre shopping mall, Poreč, approx. 30,580 sqm, preliminary design	2004. Hooters restaurant, 600 sqm, preliminary design for UPI-2M Rinolit office building & warehouse, Sveta Nedelja, 1,250 sqm, preliminary design for UPI-2M Autoprigrorje shop, Sesvete, 60 sqm, preliminary and detailed design for UPI-2M
2016.	HT administrative building; facade reconstruction and window replacement, Rijeka, approx. 2,000 sqm, detailed design T-centre, Vukovarska, Zagreb, approx. 200 sqm, preliminary, main and detailed design, oversight by project designer – interior	2008. Boat & car showroom, Samobor, approx. 97,000 sqm, preliminary design HT LTDS Varaždin, approx. 100 sqm, preliminary & executive design for the adaptation of the energy block	2003. Martinkovac office building, Rijeka, 3,400 sqm, main and detailed design for UPI-2M Arena nova office building and warehouse, Zagreb, 2,900 sqm, preliminary, main and detailed design for UPI-2M
2013.	HT headquarters in Zagreb, HoTo tower, Zagreb, approx. 15,000 sqm, preliminary design and cost estimate – renovation HT call centre, Zagreb, approx. 10,000 sqm, preliminary and detailed design – renovation (with Mita projekt)	2007. T-HT New Telecom Centre, 21,000 sqm, competition entry	2002. Merkur shopping centre in Rijeka, 4,200 sqm: design for the location permit for, for UPI-2M Palainovka caffe winter garden, for UPI-2M HT IT Data Center Utrine, Zagreb, 5,200 sqm, preliminary, main and detailed design - addition, reconstruction and renovation for UPI-2M Turbo Limač totem, Turbo Sport, Žitnjak, Zagreb, for UPI-2M Gas station, for UPI-2M Office building, Martinkovac, Rijeka, 3,400 sqm, competition entry with UPI-2M, 1st prize
		2006. T-HT IT Data centre, Varaždin, 300 sqm, detailed design - reconstruction HT IT Data Centre Utrine, Zagreb, 5,200 sqm, detailed design for 3b phase – addition, reconstruction and renovation, for UPI-2M	
		2005. Kaufland shopping centre, Kutina, approx. 4,500 sqm, preliminary design for UPI-2M Kaufland shopping centre,	

2001.

HT office building, Kupska 2, Zagreb, 1,850 sqm, reconstruction and renovation for UPI-2M

Metro cash & carry shopping centre, Jankomir, Zagreb, 14,500 sqm, main design and formwork plans for UPI-2M

HT mobile warehouse, Velika Gorica, preliminary and detailed design for UPI-2M – reconstruction

2000.

ELLABO office building & warehouse, Zagreb, 3,000 sqm, detailed design

Wienerberger exhibition pavilion, Zagreb fair, 130 sqm, preliminary and detailed design for UPI-2M

Massive office building & warehouse, Zagreb, 2,000 sqm, main design for Studio 3LHD

INDUSTRIAL DESIGN

2018

Production and storage plant, Ivanić, approx. 600 sqm, preliminary, main and detailed design

Klijet – fruit storage, approx. 150 sqm, main and detailed design

Klijet – fruit storage, Kupinec, approx. 50 sqm, main design

Boškinac wine-cellar, Novalja, approx. 850 sqm, main design

2017.

Timber drying shed for prostoria furniture factory, Sveti Križ Začretje, approx. 3,000 sqm, preliminary, main and detailed design

Urban plans and regulation analysis for Europapir production and administrative building, Slavenska Avenija, Zagreb

2016.

Stela timber drying plant, Babina Greda, 200 sqm, alterations to the main design

Uni Viridas greenhouse complex, Babina Greda, approx. 90,000 sqm, alterations to the main design

Woodchip and timber drying plant, Grubišno polje, approx. 4,000 sqm, main design

2015.

Uni Validus greenhouse complex, Babina Greda, approx. 60,000 sqm, preliminary and main design

Uni Viridas biomass dryer plant, Babina Greda, approx. 2,320 sqm, preliminary and main design

2011.

Fassa cement factory, Kruševo, approx. 30,000 sqm, preliminary and main design and project management for IGH projektiranje

2008.

Warehouse and two overhangs, Klara, approx. 4,700 sqm, preliminary design

Two warehouses, Klara, approx. 2,500 sqm, detailed design

Fassa Bortolo plaster & lime factory, Obrovac, approx. 20,000 sqm, revisions to the main design for Ured ovlaštenog arhitekta Igor Galović

Jadran film complex, Zagreb, approx. 1,800 sqm, relocation of warehouses

2007.

Eko-obrada metal recycling facility, Staro Čiče, approx. 9,000 sqm, preliminary design for Ured ovlaštenog arhitekta Igor Galović

Two warehouses, Klara, approx. 2,500 sqm, main design

2006.

Fassa Bortolo plaster & lime factory, Obrovac, approx. 20,000 sqm, main design for Ured ovlaštenog arhitekta Igor Galović

Distribution centre, Jastrebarsko, approx. 82,000 sqm, preliminary design

2005.

CIOŠ metal recycling facility,
Jankomir, Zagreb,
approx. 1,850 sqm on
approx. 34,500 sqm plot,
preliminary, main and detailed
design

Two warehouses, Klara, Zagreb,
approx. 2,500 sqm,
preliminary design

2000.

GAL house factory, Zagreb,
10,000 sqm, preliminary design

RENEWABLE DESIGN

2018

Vitaljina Border crossing,
approx. 1,250 sqm, alterations
to detailed design, oversight

Multicultural children and youth
centre, Biograd na Moru,
approx. 1,200 sqm, consultants
(obtaining the building permit)

2017.

Pašin potok border crossing,
approx. 1,500 sqm, oversight
by project designer

2016.

MUP – PNUSKOK administrative
building, Rijeka, approx. 500 sqm,
oversight by project designer -
reconstruction

Čepikuće border crossing,
approx. 1,500 sqm, oversight by
project designer

2015.

Proscribing the conditions for
the construction segment of the
call for proposals for EU regional
development fund 2013 – 2020 (grant
scheme in Croatia) for the Ministry of
Entrepreneurship and Crafts of the
Republic of Croatia, consultant

Primorje Gorski Kotar County
SWAT and anti-explosives unit
building, Rijeka, approx. 2,730 sqm,
preliminary, main and detailed
design – reconstruction

9 Schengen border crossings for the
Ministry of Finance of the Republic
of Croatia, preliminary, main and
detailed design

Canopy over the stands,
Children's square – Špansko, Zagreb,
approx. 400 sqm, preliminary and
main design

2014.

Leader of architecture senior short-
term experts: technical assistance
for project preparation for EU
regional development 2013 – 2020
fund (grant scheme in Croatia) — 12
project proposals, SMEPASS II for
Ministry of Entrepreneurship and
Crafts of Republic of Croatia

9 Schengen border crossings for the
Ministry of Finance of the Republic
of Croatia, preliminary, main and
detailed design

2013.

Senior short-term expert: Evaluation
of building documentation and
permits — public call for show of
interest for technical assistance for
project preparation for EU regional
development 2013 – 2020 fund (grant
scheme in Croatia) — 87 project
proposals, SMEPASS II for Ministry
of Entrepreneurship and Crafts of
Republic of Croatia

Zabok police precinct roof
reconstruction, preliminary and
detailed design

Sisak-Moslavina County SWAT unit
building, Sisak, approx. 3,000 sqm,
preliminary and detailed
design – reconstruction

2012.

Design documentation for the
application for EU funding
competition for Anti organized
crime & corruption department in
Rijeka, MUP RH

2011.

Police precinct, Glina,
approx. 65 sqm, preliminary and
detailed design – renovation

First Police precinct, Rijeka,
approx. 40 sqm, preliminary and
detailed design – renovation

Anti-organized crime & corruption
department, Rijeka, approx. 550 sqm,
preliminary and detailed design –
renovation and reconstruction

2010.	INDUSTRIAL DESIGN	Cogeneration plant, Šopot near Benkovac, 5.0 MW, approx. 2,000 sqm, detailed design
Pedestrian bridge, Maribor, Slovenia, competition entry		
Contemporary art gallery, Maribor, Slovenia, approx. 18,000 sqm, competition entry		
2005.	2018	New engine room for the existing plant, Popovec, 500kW, approx. 100 sqm, preliminary design
Pool complex, Karlovac, approx. 10,000 sqm, main design coordination for UPI-2M	BOP Velika Ciglana, approx. 3,800 sqm, main and detailed design, oversight	Cogeneration plant, Grubišno polje, 5.0 MW, approx. 3,000 sqm, detailed design
Bus terminal, Rijeka, approx. 10,000 sqm, competition entry with UPI-2M	Geothermal power plant, Čađavica, approx. 2,000 sqm, preliminary design	Engine and boiler room annex for the existing Spin Valis cogeneration plant, Požega, 499 kW, approx. 400 sqm, main design - reconstruction
2004.	5 exploration wells, Čađavica, approx. 5,000 sqm, preliminary design	Velika 1 geothermal power plant, Velika Ciglana, 10 MW, approx. 3,800 sqm, preliminary, main and detailed design, alterations to the main design
Music Academy, Zagreb, approx. 6,000 sqm, competition entry with UPI-2M team	Geothermal power plant, Babina greda, approx. 2,000 sqm, preliminary design	Geothermal power plant pipeline and injection wells, Velika Ciglana, approx. 30,000 sqm, preliminary, main and detailed design, alterations to the main design
2003.	5 exploration wells, Babina greda, approx. 5,000 sqm, preliminary design	
Italian embassy pavilion, Zagreb, approx. 500 sqm, competition entry with UPI-2M	Cogeneration plant, Benkovac, 4.93 MW, approx. 1,200 sqm, main and detailed design	
1998.	Cogeneration plant, Grubišno polje, 5.0 MW, approx. 1,500 sqm – main and detailed design	2016.
Contemporary art museum, Salzburg, 2,000 sqm, competition entry with Arhitekti Budanko & Witt-Doering	Water mill wheel, addition to an existing building by the creek near Kupa river, preliminary design	Prima cogeneration plant, Garešnica, approx. 700 sqm, preliminary design
1997.	Small hydroelectric power plant, Ludbreg, alterations to the preliminary design	Small hydroelectric power plant Krupa, 1,600 kW, preliminary design
Contemporary art museum, Graz, competition entry with Arhitekti Budanko & Witt-Doering	Small hydroelectric power plant, Ploče, preliminary design	Velika 1 geothermal power plant, Velika Ciglana, approx. 43,139 sqm, preliminary, main and detailed design
Opera house, Linz, competition entry with Arhitekti Budanko & Witt-Doering	2017.	Geothermal power plant pipeline, Velika Ciglana, approx. 30,000 sqm, preliminary, main and detailed design, oversight by project designer
1996.	Arbor transfero biomass cogeneration plant, Delnice, 0.5 MW, approx. 300 sqm, main and detailed design	Legrad 1 exploration well, approx. 25,000 sqm, preliminary design
Zagreb police department building, approx. 5,000 sqm, competition entry with Njirić & Njirić	Pilana Krasno biomass cogeneration plant, Krasno, 0.5 MW, approx. 700 sqm, alterations to the main design	Legrad 2 exploration well, approx. 25,000 sqm, preliminary design
Kiosk, lake Jarun, Zagreb, 6 sqm	Hydroelectric power plant, Ludbreg, 310 kW, preliminary design	
Gaje Bulata square, Split, competition entry with Arhitekti Budanko & Witt-Doering		

Legrad 3 exploration well, approx. 25,000 sqm, preliminary design	Spin Valis biomass cogeneration power plant, Požega, 1.5 MW, approx. 2,000 sqm, alterations to the main design	Solana Pag salt factory biomass boiler room, island of Pag, approx. 900 sqm, preliminary, main and detailed design
Lunjkovec-1 exploration well, approx. 25,000 sqm, preliminary design	Cropellets energija biomass cogeneration power plant, Cugovec, 1 MW, approx. 735 sqm, preliminary and main design	Design documentation for the application for EU funding competition for biomass heating system of the City of Ozalj
Lunjkovec-2 exploration well, approx. 25,000 sqm, preliminary design	Pilana Krasno biomass cogeneration power plant, Krasno, 0.5 MW, approx. 807 sqm, preliminary and main design	Unicredit Zagrebačka banka office buildings Jankomir 1 and 2, Samoborska cesta, Zagreb, approx. 7,750 sqm, preliminary and detailed design
Ferdinandovec-1 exploration well, approx. 25,000 sqm, preliminary design	Lepa 1 biomass cogeneration power plant, Lepoglava, 0.3 MW, approx. 400 sqm, preliminary design	Biomass heating system for town of Ozalj, Ozalj, preliminary and detailed design
Ferdinandovec-2 exploration well, approx. 25,000 sqm, preliminary design	Lepa 2 biomass cogeneration power plant, Lepoglava, 0.5 MW, approx. 592 sqm, preliminary design	
Kotoriba-1 exploration well, approx. 25,000 sqm, preliminary design	Velika 1 geothermal power plant, Velika Ciglana, 11 MW, preliminary and main design	2010. Marija 1 geothermal power plant, Velika Ciglana, approx. 3,000 sqm, main design
Kotoriba-2 exploration well, approx. 25,000 sqm, preliminary design		
Rečica geothermal power plant, approx. 32,000 sqm, preliminary design		2009. Marija 1 geothermal electrical plant, Velika Ciglana, approx. 3,000 sqm, preliminary design
Rečica KA-2 and KA-3 exploration wells, approx. 25,000 sqm, preliminary design	2014. Energostatik biomass power plant, Grubišno Polje, 5 MW, approx. 3,000 sqm, preliminary and main design	
2015. Uni Viridas biomass cogeneration power plant, Babina Greda, 11 MW, approx. 2,320 sqm, alteration to the main design	Spin Valis biomass cogeneration power plant, Požega, 1,5 MW, approx. 2,000 sqm, main and detailed design	
Prvo plinarsko društvo biomass cogeneration power plant, Ploče, 5 MW, approx. 2,100 sqm, preliminary and main design	Town of Josipdol biomass powered hot-water boiler-room, Josipdol, approx. 100 sqm, preliminary and detailed design	
Prvo plinarsko društvo biomass cogeneration power plant, Nova Gradiška, 2 MW, approx. 1,950 sqm, preliminary and main design	2013. Solana Pag biomass boiler room, island of Pag, approx. 900 sqm, construction oversight	
Luka Ploče energija biomass cogeneration power plant, Ploče, 5 MW, approx. 2,100 sqm, preliminary and main design	2012. Collaborator: supporting works & consulting for Univiridas biomass power plant in Babina Greda, under construction	

UTRINE

LOCATION

Utrine, Zagreb

PHASE

preliminary, main and
detailed design of
reconstruction

USE

business; IT data center

SIZE

approx. 5.200 sqm

AUTHOR

Ivo Skelin

CHIEF DESIGNER

Miomir Kliman

PHOTO

Miljenko Hegedić

CLIENT

HT Hrvatski telekom d.d.

YEAR

2008

The largest data centre in Croatia, the design and construction 8 years apart, construction in 6 phases, 4 electrical substations with a total of 4 MW of power installed, 3 diesel generators, chillers with more than 2 MW of thermal energy... all negligible compared to the opportunity to try to improve a valuable piece of industrial architecture of days gone by.



MARTINKOVAC

LOCATION

Martinkovac, Rijeka

PHASE

preliminary, main and
detailed design

USE

business

SIZE

approx. 3.400 sqm

AUTHOR

Ivo Skelin

CHIEF DESIGNER

Alen Leo Pleština

PHOTO

Vanja Šolin

CLIENTS

Alarmautomatika, Ventex,
Fast Forward

YEAR

2004

Three owners, each needs to house three uses, three floors and three volumes... decomposing the space vertically and horizontally so the house would be organically truthful. A spectacular view to the Kvarner bay framed by the ribbons on the upper level.



HT KUPSKA

LOCATION

Kupska, Zagreb

PHASE

preliminary, main and
detailed design of
reconstruction

USE

business

AUTHOR

Ivo Skelin (UPI 2M)

CLIENT

HT Hrvatski telekom d.d.

PHOTO

Vanja Šolin

YEAR

2002

A thorough reconstruction of an office building and the design of the surroundings, gateway made of hand-made cor-ten steel, a newly created terrace for the basement restaurant, a canopy over the dumpster standing for a broad brush-stroke, the composition of the foyer and a steel staircase that rocks magnificently while you walk on it... it has all happened with full understanding and support by the owner.



PROSTORIA

LOCATION

Sveti Križ Začretje

PHASE

preliminary, main
and detailed design

USE

production;
timber drying shed

SIZE

approx. 3.000 sqm

AUTHOR

Ivo Skelin

PHOTO

Robert Leš

CLIENT

prostoria d.o.o.

YEAR

2018

Timber drying shed within a furniture plant observes all requirements;

it blocks direct sunlight, allows wind and draft, follows organizational and traffic logic, its spans are rational, its proportions balanced, its materials noble and there is a trick to its cuteness.



FASSA

LOCATION

Kruševo near Obrovac

PHASE

preliminary design

USE

production;
cement factory

SIZE

approx. 20.000 sqm

PROJECT MANAGER

Ivo Skelin

CHIEF DESIGNER

Jure Radić

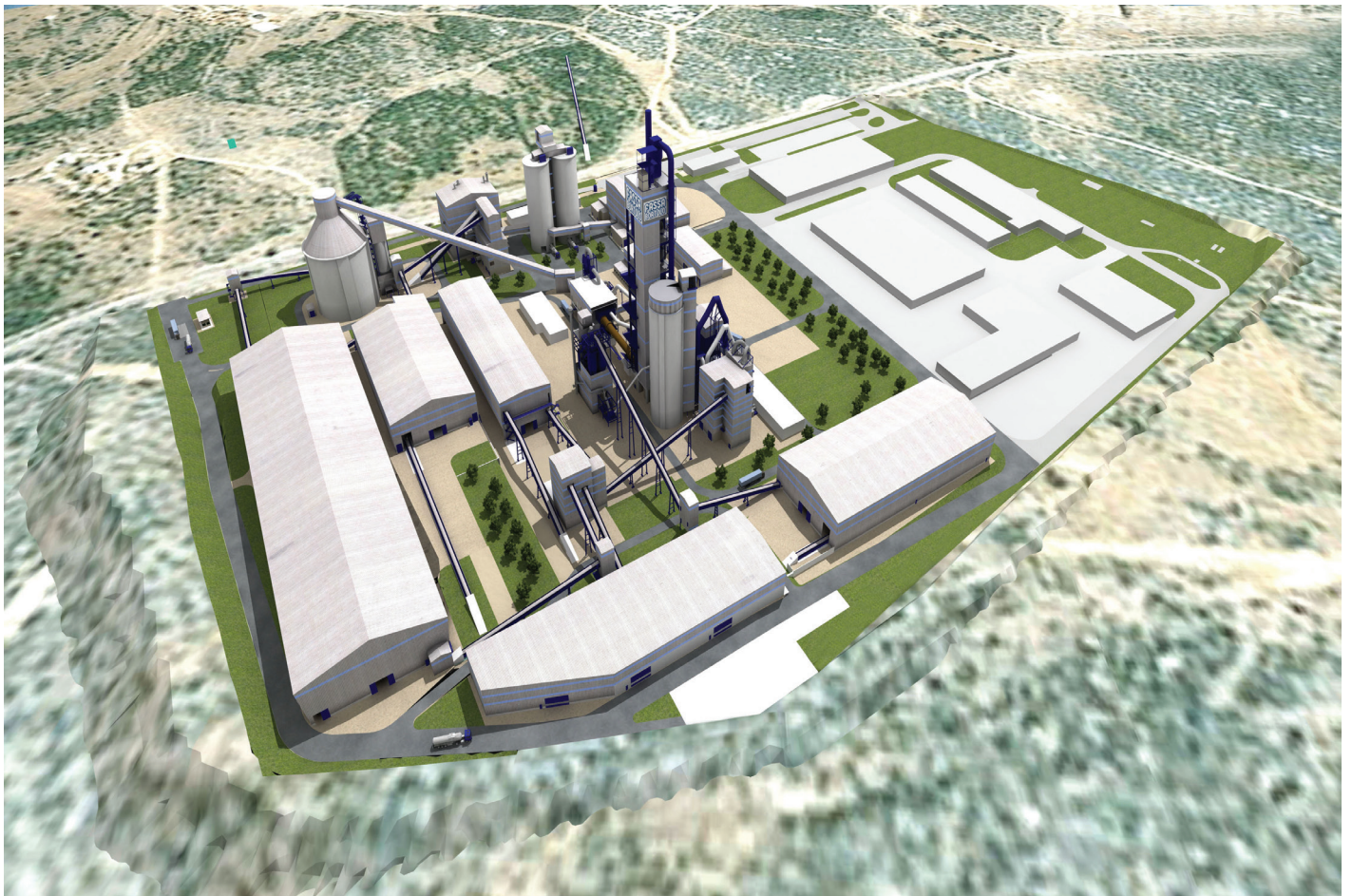
CLIENT

Fassa d.o.o.

YEAR

2012

A cement factory is a very complex technological system so it requires complex procedures when planning the design process... developers and their technologists, numerous design offices and their engineers, a number of public authorities and their prescribed requirements, two ministries... developing a preliminary design and obtaining the location permit for such a spatial intervention in real time has been quite an organizational and engineering undertaking of a number of committed individuals.



CIOS

LOCATION

Jankomir, Zagreb

PHASE

preliminary, main and
detailed design

USE

production; metal recycling
plant

SIZE

approx. 34.500 sqm

AUTHOR

Ivo Skelin

CHIEF DESIGNER

Mirjana Smoljo

CLIENT

Cios d.o.o.

YEAR

2005 / 2006

The design took environment into account by observing all regulations and fulfilling all environmental, water and air preservation and noise reduction requirements. Environmental care has been exercised through careful and consequential construction, the usage of the building and recycling significant amounts of metal waste properly.



BORDER CROSSINGS

LOCATION
Croatia

PHASE
preliminary, main
and detailed design

USE
public

AUTHOR
Ivo Skelin

CHIEF DESIGNER
Damir Keglević

PROJECT MANAGER
Danijel Zdolc

CLIENT
Croatian Ministry
of Finance

YEAR
2017

Out of nine designed border crossings six have been constructed: Cera, Čepikuće, Vukov Klanac, Vitaljina, Gejkovac and Pašin Potok. As opposed to the simplicity and antiquity of metaphoric implications of border crossings, design briefs were complex, formed by a number of security demands, protocols and schedules. Apart from managing to handle the procedural complexity of designing public buildings, the most important part of the process was to incorporate the border crossings into real-life and specific topographies and match them to real places and views.



BRIDGE

LOCATION

Maribor, Slovenia

PHASE

preliminary design,
competition entry

USE

public;
pedestrian bridge

AUTHOR

Ivo Skelin

YEAR

2010

A bridge is a pathway; the shortest distance between two points; a structure that connects two riverbanks trying to grasp the intangible. But a bridge can also be a place, a meeting point, a space to rest.

Two riverbanks, two paths that meet and go their separate ways, creating two places, one more isolated than the other, open to the river and to themselves.



GALLERY

LOCATION

Maribor, Slovenia

PHASE

preliminary design,
competition entry

USE

public; contemporary art
gallery

SIZE

approx. 18.000 sqm

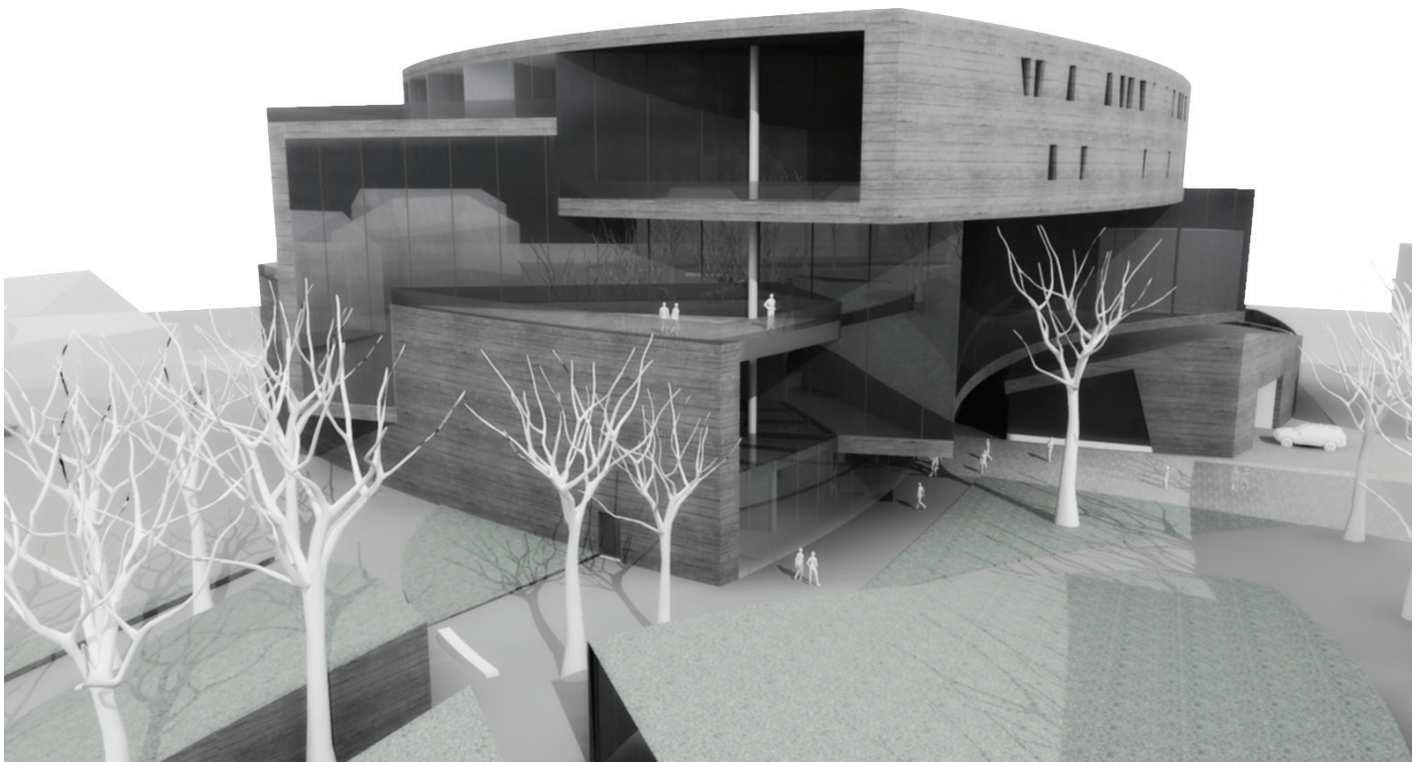
AUTHOR

Ivo Skelin & Maja Vukušić

YEAR

2010

The basic concept of the building is a composition of three meanders, each created by two differently curved concrete slabs and one wall. They interact with each other creating a space that fluidly moves around them. Since the slabs and the walls are supported by a grid of columns, there are no restrictions other than the function.



CIGLENA GEOTHERMAL POWER PLANT

LOCATION

Velika Ciglena

PHASE

preliminary, main and
detailed design

USE

production; geothermal
power plant

SIZE

17 MW

AUTHOR

Maja Vukušić

CHIEF DESIGNER

Anđelko Mikulandrić

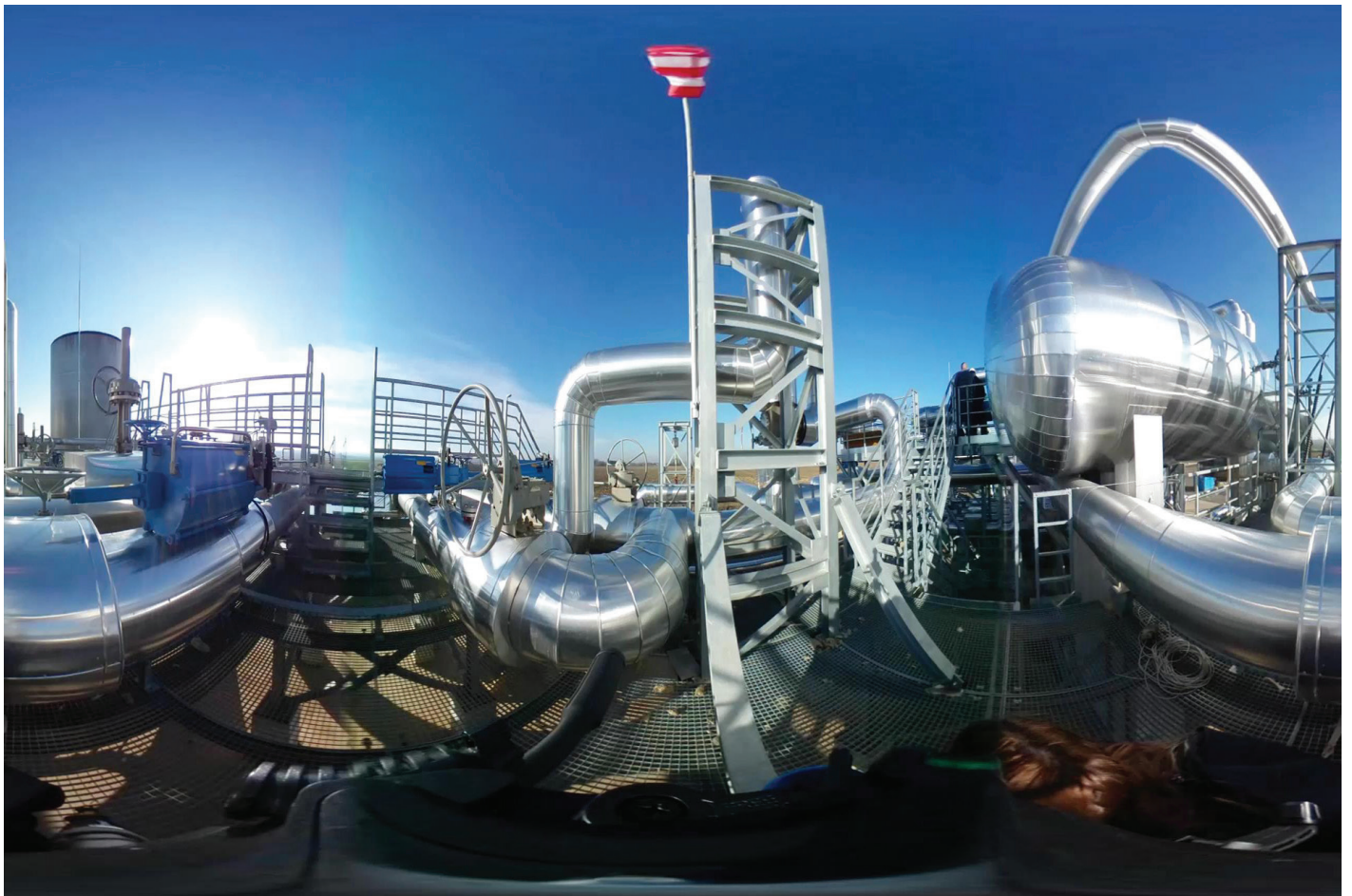
CLIENT

Geoen d.o.o.

year

2018

Velika Ciglena 17,5 MW geothermal powerplant is the first Organic Rankine Cycle geothermal powerplant in Croatia and the biggest such in Europe. It has been constructed near Bjelovar in the open country surrounded by corn fields. The plant is fueled by steam and 170°C hot water in order to produce electrical power and supply it to the grid. A mining plant with a borehole consisting of production and injection wells and pipelines is also a part of the geothermal power plant. The complexity of managing geothermal fluids, which is the essence of this complex project, is mirrored in an intricate, harmonic composition of mechanical elements, thus becoming the basis for the industrial design aesthetic.



BABINA GREDA COGENERATION PLANT

LOCATION

Babina Greda

PHASE

preliminary, main
and detailed design

USE

production; biomass
cogeneration power plant

SIZE

11MW

ARCHITECTURE DESIGNER

Goran Obranović

CHIEF DESIGNER

Slaven Pavlović

PHOTO

Robert Leš

YEAR

2015

Architecture in the service of mechanical engineering – designing an industrial plant in the open country lacking a pronounced context, led by the logic of technology and technological processes. A sequence of concrete and steel buildings and structures constrained by transport, storage and combustion of wood biomass for the purpose of producing electrical power and heat. Industrial design in its most sincere form, void of all unnecessary elements.



SPIN VALIS COGENERATION PLANT

LOCATION

Požega

PHASE

preliminary, main
and detailed design

USE

production; biomass
cogeneration power plant

SIZE

1.7 MW

AUTHORS

Goran Obranović &
Ivo Skelin

CHIEF DESIGNER

Marijan Hohnjec

YEAR

2014

When you start a project with the construction already underway then there is “no time Toulouse”...

From “Hello” to the revised foundation formwork and reinforcement plans in three days...

After that, a military style operation...
Electricity has flowed on time.



GRUBIŠNO POLJE COGENERATION PLANT

LOCATION

Grubišno Polje

PHASE

preliminary, main
and detailed design

USE

production; biomass
cogeneration power plant

SIZE

5 MW

AUTHOR

Goran Obranović

CHIEF DESIGNER

Slaven Pavlović

PHOTO

Robert Leš

YEAR

2018

Cogeneration plant on the outskirts of Grubišno Polje is a part of a larger facility that also includes a timber drying plant. The focus of the facility is placed on a large building that houses the boiler and the generator. The building is surrounded by various structures that are included in electrical and thermal power production processes. The coldness of concrete and steel is softened by the use of bright primary colors for the details and the use of warm brown hues, the color of primary raw materials — wood chips, on the finish materials.

